

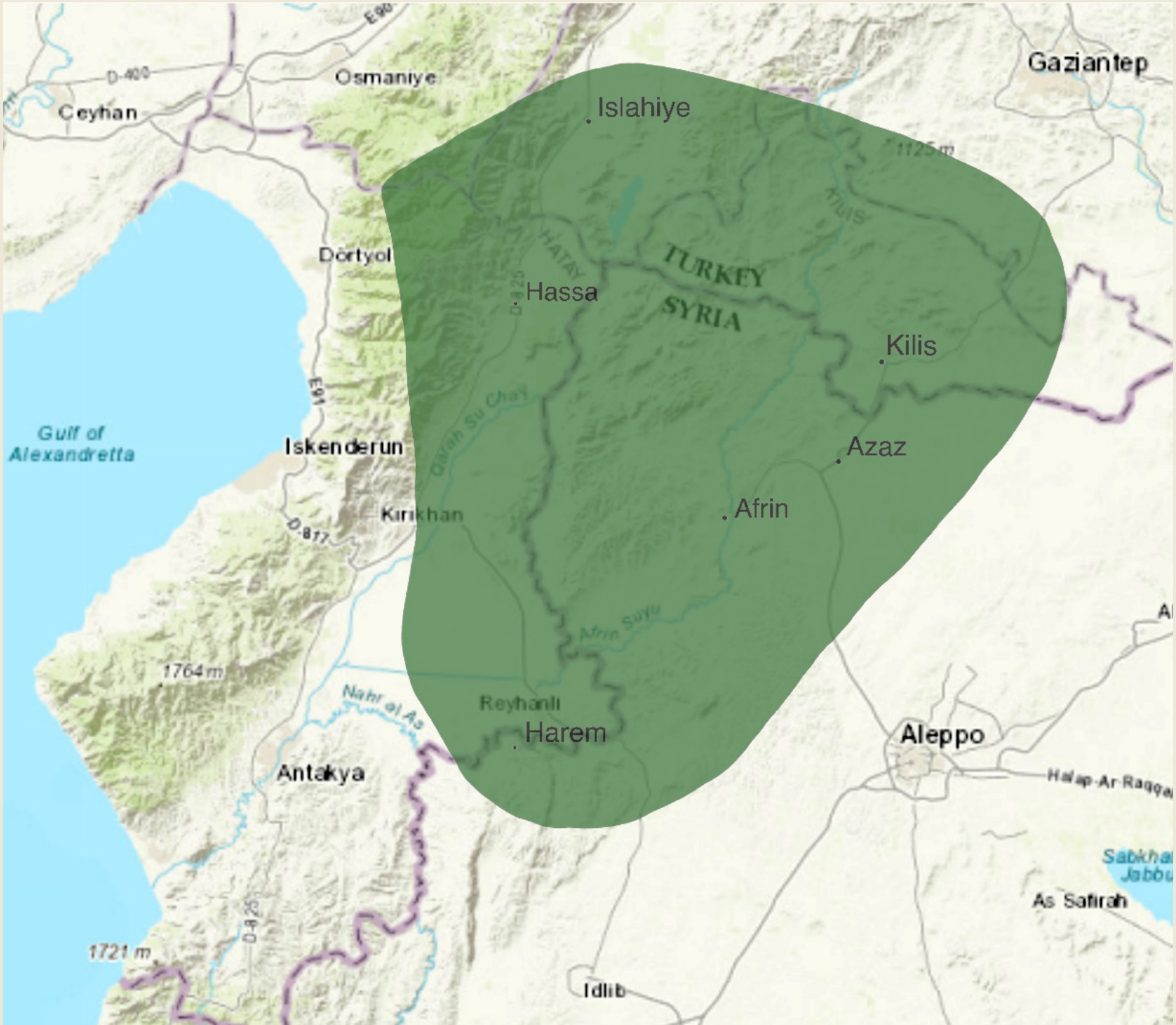
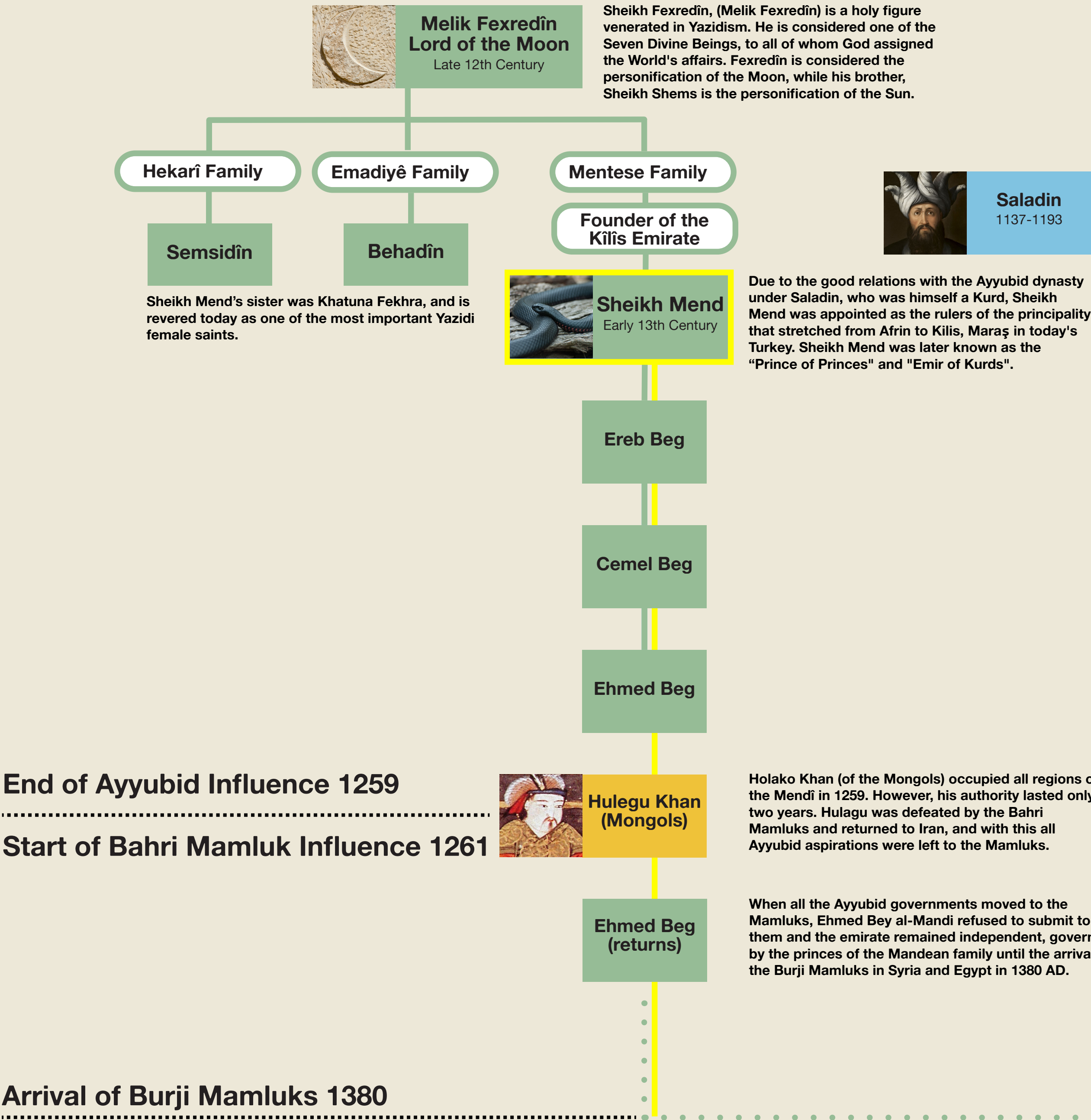


THE MENDÎ / KÎLÎS EMIRATE

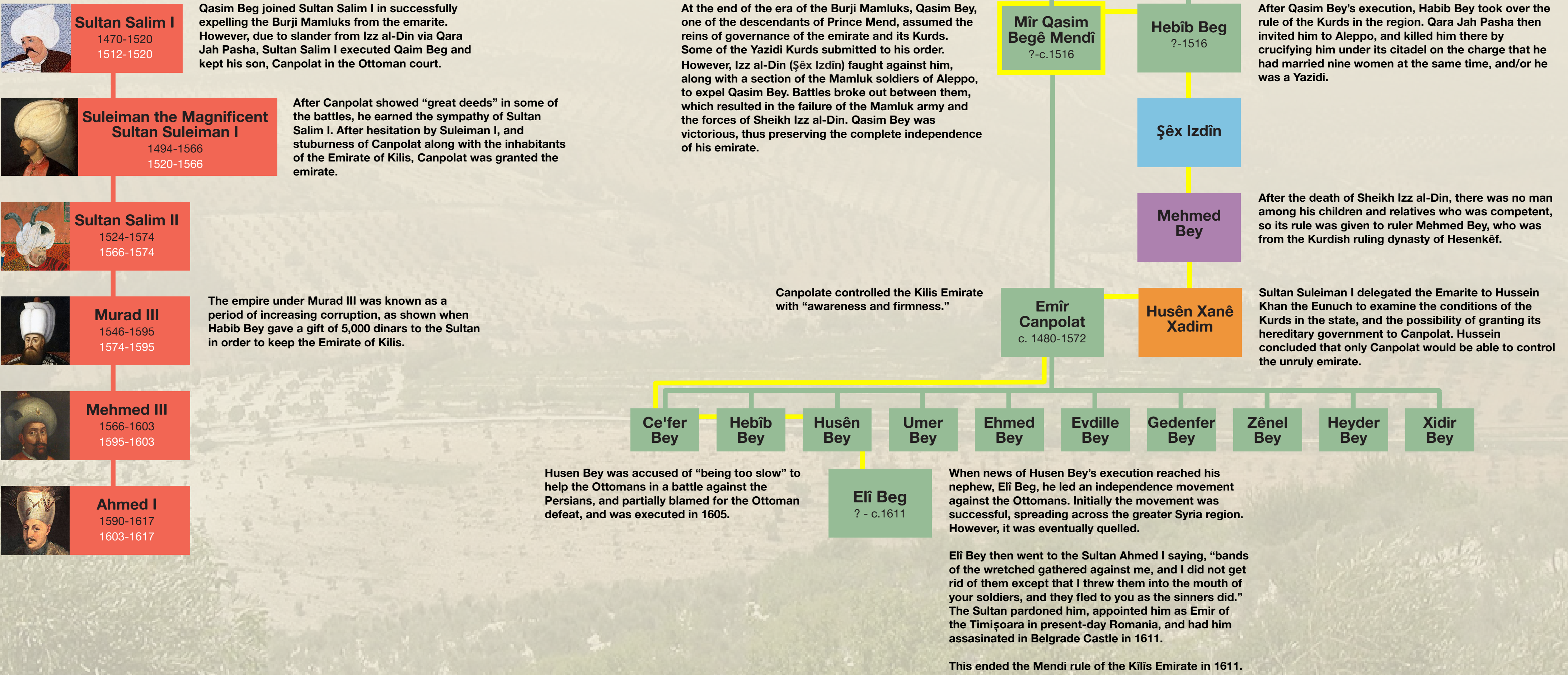


عفرین

Chart by: Zachariah Hopkins
www.zachariahhopkins.com



Start of Ottoman Influence 1516



Post Script

The followers of Eli Beg remained in the region and were a source of trouble between 1613 and the 1690s, notably the Okçu İzzeddinli tribe which was involved in banditry.

The descendants of Canbolat are named 'Canbolatogulları' and fled to Lebanon in 1630. The Druze Jumblatt family are descendants of this family. The Jumblatt family is an important family in Lebanese history and is still involved in Lebanese politics.

